



	 HALLMARK	
 MANUFACTURER		 GLOBAL BUSINESS



 KNIFE SHARPENER	 HEDGE SHEAR	 ANVIL PRUNING SHEAR	 BY-PASS PRUNING SHEAR
 LONG REACH	 LOPPER	 FRUIT PRUNING SHEAR	 GRASS SHEAR
 FRUIT PRUNING SHEAR	 GRAFTING KNIFE	 KNIFE SHARPENER	 KNIFE SHARPENER

JIN HUR INDUSTRIAL CO., LTD

JIIN HAUR INDUSTRIAL CO., LTD

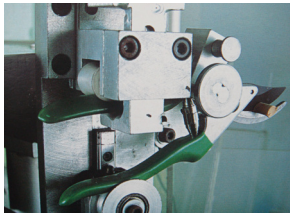
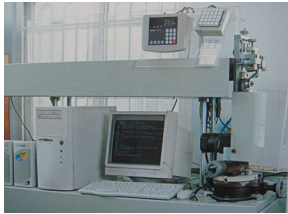
**PROFESSIONAL
MANUFACTURER
AND THE HALLMARK
OF QUALITY
IN GARDEN TOOLS**



MORE THAN 40 YEARS OF EXPERIENCE IN GARDEN TOOLS MANUFACTURING.



- 2_ Aerial viewpoint of our factory.
- 2_ CNC machine used in profession, OEM production & samples.
- 3_ Automatic puncher machine.
- 4_ Automation store house systematic to control semi-finished product and spare part.
- 5_ The auto machinery of the cut wood test.
- 6_ The automatic machinery of the cut test.
- 7_ FDM prototyping machine.



ABOUT US//

COMPANY PROFILE

Jiin Haur Industrial Co., Ltd

PROFESSIONAL MANUFACTURER AND THE HALLMARK OF QUALITY IN GARDEN TOOLS



Jiin Haur Industrial Co., Ltd. was founded by Mr. Shyh Biau Wu in 1977. With more than 40 years of experience in scissors manufacturing, We has earned several patents. Mr. Wu has led the corporation to actively engage in the R&D and manufacture of horticultural tools.

An integrated operating process from manufacturing, design and inspection to warehousing has resulted in SGS certification as well as earning high regard and favor from worldwide-clients. With excellent R&D team and rich experience production line, Jiin Haur Industrial Co., Ltd. Features substantial OEM and active coordination.

Jiin Haur's business strategy is to manufacture high quality, modern and easy-to-operate products at competitive prices. In order to satisfy customers' needs, the company will offer its best services. Wel excels at designing & manufacturing high quality, fashional, durable & easily operated patented products. Its products are highly appreciated all over the world, particulawrvly in the U.S.A., Europe, Japan, Korea, & other countries. Our products are Patented Worldwide.

BRAND NAME
PRAISE

FOUNDED YEAR
1977
WITH MORE THAN
40
EXPERIENCES

EXPORTER MANUFACTURER

EXPORT PERCENTAGE 99%

EUROPE 50% | U.S.A. 32% | OTHERS 18%



EQUIPMENTS IN HOUSE



3D Printer



Automatic Stamping Machine



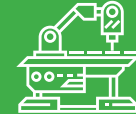
Milling Machine



CNC Machine



Laser Engraving Machine



Tampo Printing Machine



Robot-Hand Welding Machine



Cutting Testing Machine



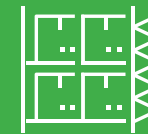
Loading Drop Testing Machine



Cycle Testing Machine



Hardness Testing Machine

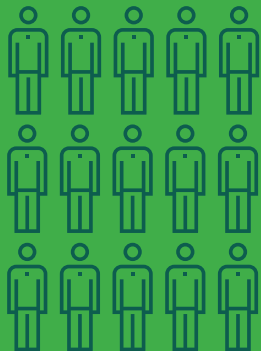


Storehouse Shelves



Automation Storehouse Systematic
Automation storehouse systematic to control semi-finished product and spare parts.

NUMBER OF TOTAL STAFF
60-100



RESEARCH & DEVELOPMENT R&D TEAM



Our R&D department is composed of 4-5 technicians who specialize in computer technology, product design, and market analysis. They aim to develop new products for the new markets.



PRIMARY COMEPETITIVE ADVANTAGES

- Experiences R& D Department
- OEM Capability
- Large Product Line
- Reliability Reputation
- Buyer's Specifications Accepted
- Efficient QC Department

QUALITY CONTROL

The QC department is composed of 5 skilled technicians and trade inspectors. We employ quality checks at all levels of production. From sourcing of materials and components to packaging of the finished goods, we observe strict and through quality inspections.

OEM CAPABILITY

We are capable of providing buyer's label and design services. All types of OEM orders are also accepted.

QUALITY GUARANTEED

ABOUT US//

COMPANY INFORMATION

JIIN HAUR INDUSTRIAL CO., LTD

BRAND NAME

JIIN HAUR / PRAISE

BUSINESS TYPE

Exporter Manufacturer

EXPORT PERCENTAGE

99%

PRIMARY COMPETITIVE ADVANTAGES

Experiences R&D Department
 OEM Capability
 Large Product Lines
 Reliability
 Reputation
 Buyer's Specifications Accepted
 Efficient QC Department

NUMBER OF TOTAL STAFF

80

PRODUCT RANGE

Pruning Shears, Drop Forged Pruner,
 Long Reach Pruner, Knives, Sharpeners
 Grass Shears, Lopper & Hedge Shears.

SAFETY APPROVAL

ISO 9001, SGS

EXPORT MARKETS

U.S.A. 35%
 Europe 50%
 Others 15%

R&D//

RESEARCH & DEVELOPMENT

JJIN HAUR INDUSTRIAL CO., LTD

R&D STAFF

5

SOFTWARE

AutoCad 2D, AutoCad 3D, UG, Solidwork...,etc.

PROFILE

Our R&D department is composed of 4 technicians who specialize in computer technology, product design, and market analysis. They aim to develop new products for the new markets.

Our R&D team gives emphasis on the product's type, function, material and design. They are capable of producing **10-15** new items each year.

QC//

QUALITY CONTROL

JJIN HAUR INDUSTRIAL CO., LTD

QC STAFF

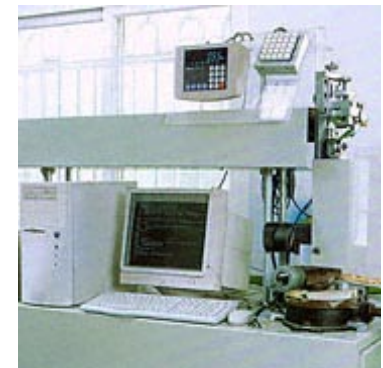
12

QC TECHNICAL SUPPORT

The QC department is composed of 5 to 10 skilled technicians and trade inspectors. We also employ the services of QC subcontractors.

TESTING DETAILS

We employ quality checks at all levels of production. From sourcing of materials and components to packaging of the finished goods, we observe strict and thorough quality inspections.



- 1_ Hard testing machine.
- 2_ The auto machinery of the cut wood test
- 3_ The auto machinery of the cut wood test

AUTO SYSTEM//

AUTOMATION STOREHOUSE SYSTEMATIC

JJIN HAUR INDUSTRIAL CO., LTD



Automation Storehouse Systematic to Control Semi-Finished Product and Spare Parts.

OEM//

OEM

JJIN HAUR INDUSTRIAL CO., LTD

We are capable of providing buyer's label and design services.
All types of OEM orders are also accepted.



1 2 3

- 1_ CNC machine used in OEM production & samples.
- 2_ Production Lines.
- 3_ Production Lines.

SHOWROOM//

SHOWROOM

JJIN HAUR INDUSTRIAL CO., LTD

Full Product lines in our showroom.
Best space for customers meeting on site.





